

**CHAREST
WEINBERG**

HERD THINNER

Curated by David Hunt

December 1, 2009 through February 28, 2010

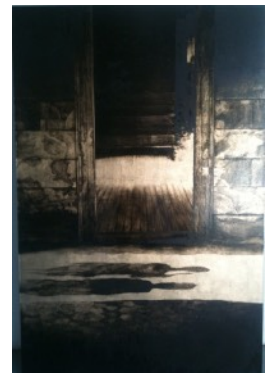
Charest-Weinberg Gallery is pleased to present *HERD THINNER*, a group exhibition curated by David Hunt.

Pedro Barbeito, Slater Bradley, Suntek Chung, Richard Dupont, Martha Friedman, Sheree Hovsepian, Rashid Johnson, Simone Leigh, André Masson, Fernando Mastrangelo, Raha Raissnia, Marc Seguin, Seher Shah, Erin Shirreff, Jeff Sonhouse and Ouattara Watts.

Pedro Barbeito
Scylla 6, 2009
Acrylic on canvas
90 x 156 inches



Slater Bradley
Trespass, 2009
Oil and moon gold leaf on linen
60 x 40 inches



Suntek Chung
The road is shorter than you have been shown, 2009
Cold bronze
4 x 4 x 7 feet
Edition of 3 + 1AP



Richard Dupont

Couple, 2009

Cast pigmented urethane, nylon, oil paint and wood in plexiglass vitrine

86 x 36 x 36 inches

Edition of 3 + 2AP (each unique)



Martha Friedman

Petrified Waffle IV, 2009

Wood, formica, marble

35 3/4 x 25 3/4 inches

Edition of 2 +1AP



Martha Friedman

Petrified Waffle VI, 2009

Wood, formica, marble

39 1/4 x 17 x 17 inches

Edition of 2 +1AP



Martha Friedman

Petrified Waffle VIII, 2009

Wood, formica, marble

39 3/4 x 14 1/16 x 14 1/16 inches

Edition of 2 +1AP

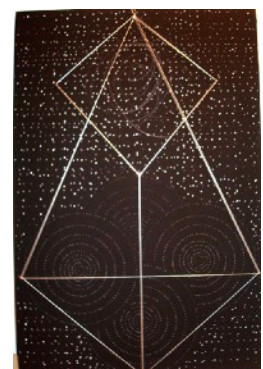


Sheree Hovsepian

Coming Down Easy, 2009

Inkjet print, graphite, string and nails

17 x 25 inches



Rashid Johnson

Run, 2009

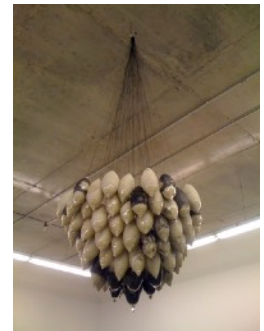
Silk lamé, spray paint
36 x 48 inches



Simone Leigh

Emperor Jones, 2009

Porcelain, grease paint, graphite, coal dust, plastic, glass, wire
Dimensions variable
Edition of 3 (each unique)



Fernando Mastrangelo

This Too Shall Pass (Virgin Mary), 2009

Gunpowder, MDF, hemp, automotive paint, 13 rosaries
63 x 10 x 10 inches



Fernando Mastrangelo

La Salva Mara (smile now, cry later), 2009

Cremated human ash, chrome hands
84 x 48 inches



Fernando Mastrangelo

La Salva Mara (Santa Muerte), 2009

Cremated human ash, chrome hands



André Masson

Cheval Attaqué par un poisson, 1939
Sand and oil on wood
16.5 x 18.5 inches

Collection François Odermatt



Raha Raissnia

Untitled, 2008
Oil on canvas
80 x 72 inches



Marc Seguin

Ruins, 2009
Charcoal and human ash on canvas
84 x 60 inches



Seher Shah

The Expansion Complex I, 2009
Archival giclee print
32 x 54 inches (unframed)
Edition of 5



Seher Shah

The Expansion Complex II, 2009
Archival giclee print
32 x 54 inches (unframed)
Edition of 5



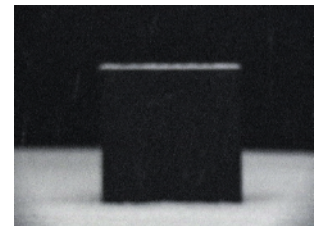
Erin Shirreff

Sculpture Park, Tony Smith, Die, 2007

Color video, silent, single channel

7:16 minutes

Edition of 3 + 2 AP



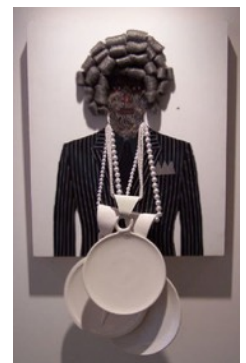
Jeff Sonhouse

Hypermaskulinity Resuscitated, 2004

Mixed media on wood

27 x 32 inches

Artist Pension Trust Collection



Ouattara Watts

Rebel #2, 2009

Mixed media on canvas

64 x 90 inches



Ouattara Watts

Makeda, 2009

Mixed media on canvas

60 x 72 inches

